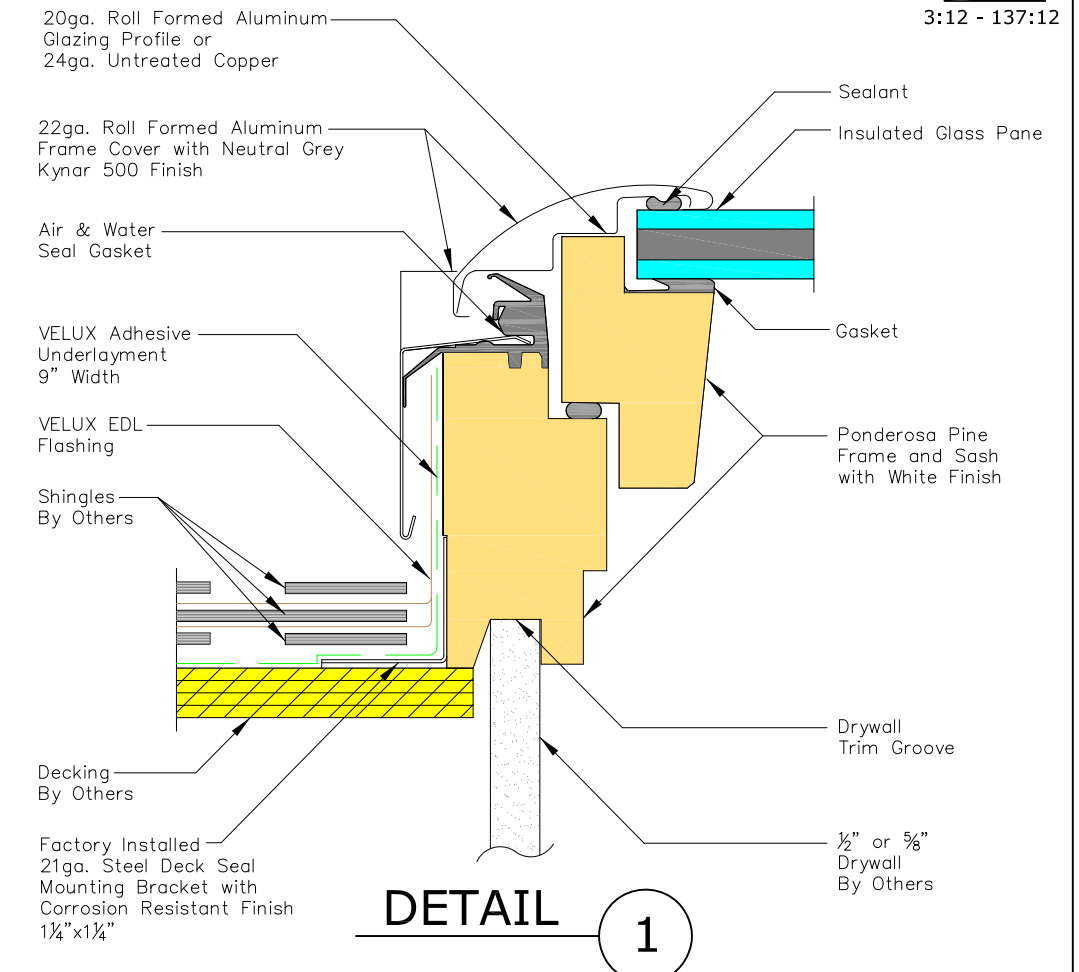
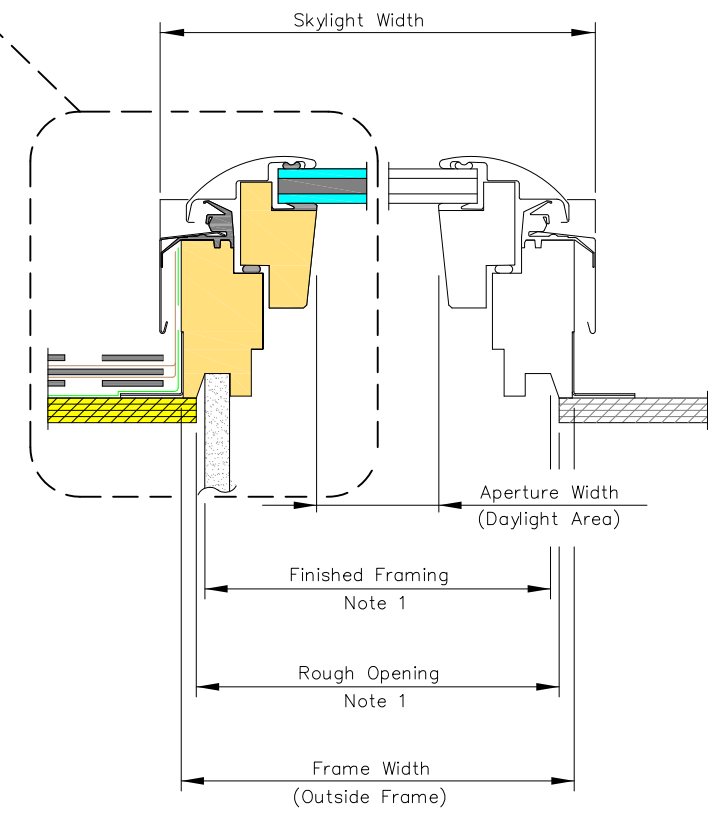


SEE DETAIL 1



STANDARD GLAZING OPTIONS:

- Laminated LowE3 (04)

COMPATIBLE FLASHINGS:

- EDL Step flashing
- EKL/EKX Combi flashing
- EDW Tile flashing
- EKW/EKX Combi tile flashing
- EDM Metal roof flashing
- ECB Counter flashing for curbs

ELECTRICAL/CONTROL DATA:


- VSS Skylight controlled via 2.4 GHz radio frequency KLR 200 remote control provided with skylight. Optional controls for VSS Skylight are KLI 110 Wall Mounted Keypad or KLF 100 Home Automation Integration Kit.
- Solar Operator, Powered by Battery Pack with 24VDC output. Battery Pack is a 9 Cell MiMH 10.8V, 2100mAH.

PRODUCT DIMENSIONS

| METRIC UNITS (MILLIMETERS) | | | | | | | | | | IMPERIAL UNITS (INCHES) | | | | | | | | | |
|----------------------------|---------------------|-------------|----------------------|----------------|----------------------|--------------|-----------------------|-----------------|----------------------------|-------------------------|---------------------|-------------|----------------------|----------------|----------------------|--------------|-----------------------|-----------------|--------------------------|
| Size | Rough Opening Width | Frame Width | Frame Aperture Width | Skylight Width | Rough Opening Height | Frame Height | Frame Aperture Height | Skylight Height | Daylight Area (Sq. Meters) | Size | Rough Opening Width | Frame Width | Frame Aperture Width | Skylight Width | Rough Opening Height | Frame Height | Frame Aperture Height | Skylight Height | Daylight Area (Sq. Feet) |
| C01 | 533 | 546 | 407 | 566.7 | 682 | 695 | 519 | 720 | .21 | C01 | 21 | 21 1/2 | 16 | 22 5/16 | 26 7/8 | 27 3/8 | 20 7/16 | 28 3/8 | 2.27 |
| C04 | 533 | 546 | 407 | 566.7 | 962 | 975 | 799 | 1000 | .33 | C04 | 21 | 21 1/2 | 16 | 22 5/16 | 37 7/8 | 38 3/8 | 31 7/16 | 39 3/8 | 3.50 |
| C06 | 533 | 546 | 407 | 566.7 | 1162 | 1175 | 999 | 1200 | .41 | C06 | 21 | 21 1/2 | 16 | 22 5/16 | 45 3/4 | 46 1/4 | 39 5/16 | 47 1/4 | 4.38 |
| C08 | 533 | 546 | 407 | 566.7 | 1382 | 1395 | 1219 | 1420 | .50 | C08 | 21 | 21 1/2 | 16 | 22 5/16 | 54 7/16 | 54 15/16 | 48 | 55 15/16 | 5.34 |
| M02 | 763 | 776 | 637 | 796.7 | 762 | 775 | 599 | 763 | .38 | M02 | 30 1/16 | 30 9/16 | 25 | 31 3/8 | 30 | 30 1/2 | 23 9/16 | 30 | 4.11 |
| M04 | 763 | 776 | 637 | 796.7 | 962 | 975 | 799 | 1000 | .51 | M04 | 30 1/16 | 30 9/16 | 25 | 31 3/8 | 37 7/8 | 38 3/8 | 31 7/16 | 39 3/8 | 5.48 |
| M06 | 763 | 776 | 637 | 796.7 | 1162 | 1175 | 999 | 1200 | .64 | M06 | 30 1/16 | 30 9/16 | 25 | 31 3/8 | 45 3/4 | 46 1/4 | 39 5/16 | 47 1/4 | 6.86 |
| M08 | 763 | 776 | 637 | 796.7 | 1382 | 1395 | 1219 | 1420 | .78 | M08 | 30 1/16 | 30 9/16 | 25 | 31 3/8 | 54 7/16 | 54 15/16 | 48 | 55 15/16 | 8.36 |
| S01 | 1123 | 1136 | 997 | 1156.7 | 682 | 695 | 519 | 720 | .52 | S01 | 44 1/4 | 44 3/4 | 39 1/4 | 45 9/16 | 26 7/8 | 27 3/8 | 20 7/16 | 28 3/8 | 5.57 |
| S06 | 1123 | 1136 | 997 | 1156.7 | 1162 | 1175 | 999 | 1200 | 1.0 | S06 | 44 1/4 | 44 3/4 | 39 1/4 | 45 9/16 | 45 3/4 | 46 1/4 | 39 5/16 | 47 1/4 | 10.73 |

NOTES:

- The ROUGH OPENING and FINISHED FRAMING dimensions are based on perpendicular interior finish material on all four sides and these dimensions will vary depending on the roof construction, the thickness and the design of the interior finish material.
- Max sash opening is 11" by stainless steel chain.
- Standard Panel Width dimension includes Solar Panel bracket and bracket end caps.



Sky-Global Product Management

VELUX
1418 Evans Pond Road
Greenwood, SC 29649
1-800-88-VELUX
www.VELUXUSA.com

VSS - Solar Venting Skylight