

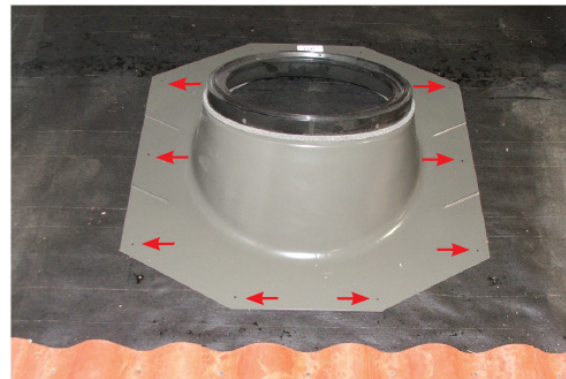
# ZTG

## VELUX SUN TUNNEL™ skylight tile flashings instructions

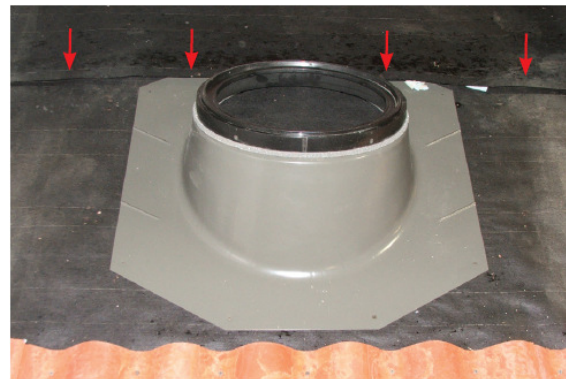


Skylights

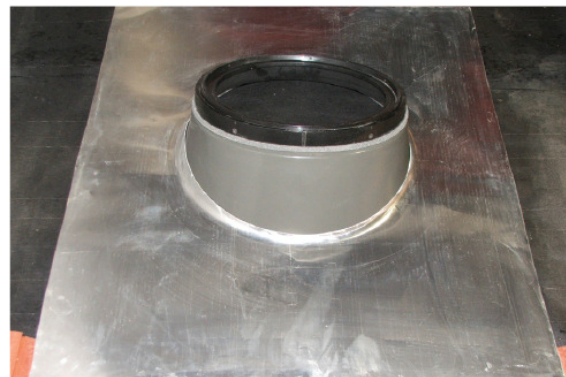
ZTG 022



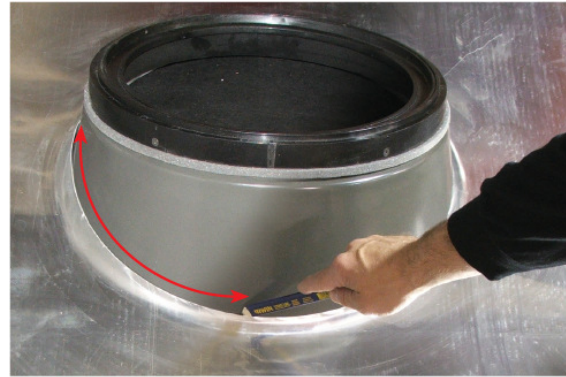
- 1 Secure the standard VELUX SUN TUNNEL™ skylight flashing to the roof deck with the screws provided.



- 2 Overlap the top of the standard flashing with the base roofing material or underlayment to allow for proper drainage.



- 3 Place the aluminum tile flashing over the standard flashing. The top of the tile flashing should rest on the top of the standard flashing. The bottom edge should be positioned over the tiles.



- 4** Mark the top perimeter of the tile flashing on the standard flashing. Then remove tile flashing.



- 5** Apply a generous bead of silicone along the bottom of the marked line all the way around the perimeter of the standard flashing.

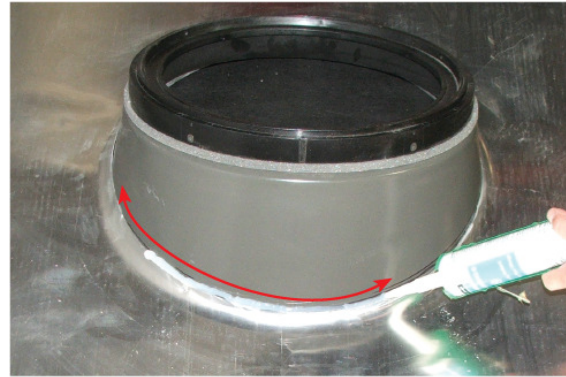


- 6** Reposition the aluminum tile flashing sheet over the standard flashing so you can barely see the line you marked.

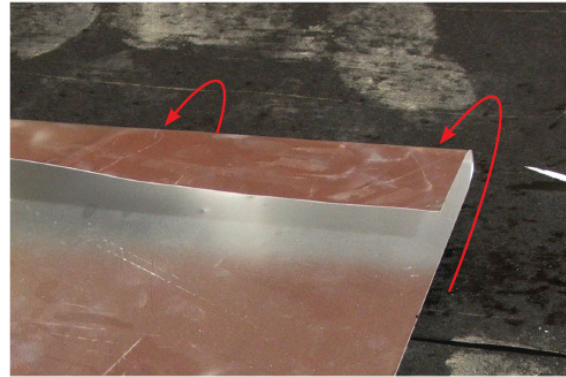


- 7** The screw holes should be pre-drilled perpendicular to the tile flashing surface and evenly spaced around the parameter of the tile flashing. Pre-drill holes with a 3/32" drill bit a 1/4" down from the top edge of the tile flashing. The 22" flashings should use all six screws, the 14" flashing should use five screws, and the 10" flashing should use four screws to fasten the tile flashing to the standard flashing.

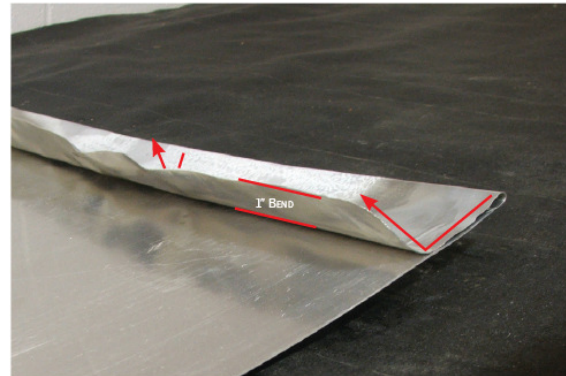




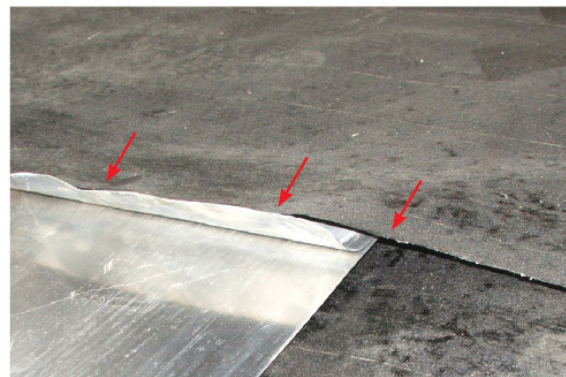
- 8 Once secured, provide another bead of silicone over the joint between the standard flashing and the tile flashing. Also, seal the exposed screw heads.



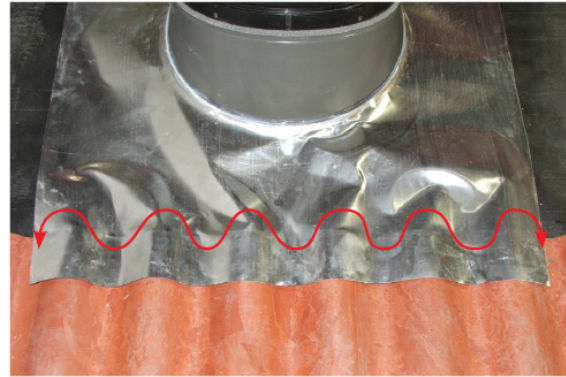
- 9 Create a water diverting channel by folding 3" to 4" of the tile flashing top edge over the tile flashing piece so that it runs parallel.



- 10 Take 1" of the folded top edge and fold it upwards.



- 11 Position the base roofing material or felt over the folded top edge of the tile flashing, stopping short of the vertical fold.



**12** Form the bottom of the tile flashing to conform to the tile profile.



**13** Create water diverters on the sides, by folding 1½" of the flashing up on each side.



**14** Start installing the tiles around the tile flashing system.



**15** Caution should be taken not to penetrate the flashing with the tile fasteners.



**16** Some codes require that the dome be raised off the plane of the roof. These requirements can be met by purchasing a ZTA turret. VELUX offers a 6.5" or a 9" turret system.

Secondly, additional codes require a fire protection band. To meet these codes, VELUX offers a ZZZ 192 fire protection ring. These are available in 2", 6.5" or 9" heights for all SUN TUNNEL skylight diameters. Contact VELUX for more information.